

Universal Testing Type Accelerometer

DETAILS

Model C02B01 C04B01 charge single-axis acceleration sensor, using piezoelectric ceramic shear structure, with a wide band frequency response, low sensitivity temperature response characteristics, high-quality piezoelectric ceramics with long-term stability can ensure many years of accurate measurement. The housing is laser welded stainless steel for high sealing grade and strength, with M5 mounting threads on the bottom.

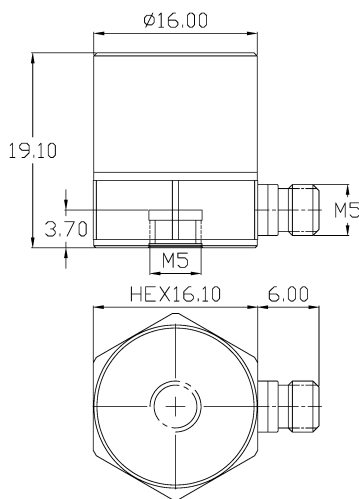
FEATURES

- IEPE Universal Acceleration Sensor
- Standard series with multiple range options
- Shear structure
- Broadband response

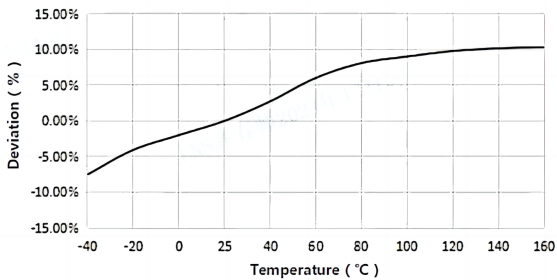
TYPICAL APPLICATIONS

- Vibration control
- General vibration monitoring

Fig_1 Dimensions of C02B01 C04B01

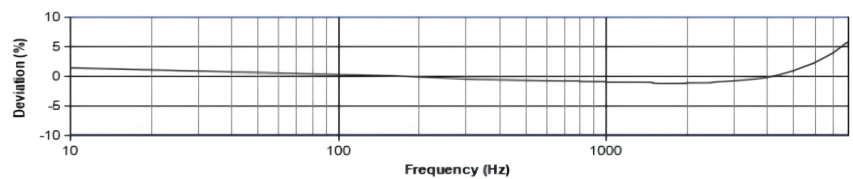


Fig_2 Typical Temperature Response



C02B01
C04B01

Fig_3 Typical Frequency Response



Specifications-CXXB01

MODEL NUMBER	UNIT	C02B01	C04B01
PERFORMANCE			
Sensitivity ¹	pC/g	10	30
	pC/(m/s ²)	1	3
Broadband Resolution ²	g	±1500	±1000
Non-Linearity ³	%	1	
Frequency Range	± 5%	-	-
	±10%	0.5-8k	0.5-8k
Resonance Frequency ²	Hz	≥30k	≥25k
Discharge Time Constant ²	s	-	
Transverse Sensitivity	%	≤5	
ELECTRICAL			
Capacitance	PF	800	780
Resistance	Ω	≥1×10 ¹¹	≥1×10 ¹¹
Electrical Isolation	Ω	-	-
ENVIRONMENTAL			
Sinusoidal Vibration Limit ⁴	g	3000	2000
Shock Limit ⁴	g	5000	2500
Temperature Range	°C	-40-160	
	°F	-104-320	
Temperature Response ²	%/°C	0.08	
PHYSICAL			
Sealing	-	Laser welding IP68	
Sensing Element	-	Piezoelectric ceramics	
Housing Material	-	Stainless steel	
Size	mm	HEX 16.1×19.1	HEX 16.1×19.1
	in	HEX 0.634×0.752	HEX 0.634×0.752
Electrical Connector	-	M5 Side	
Mounting Thread	-	M5	M5
Weight ²	g	25	23.6
	oz	0.882	0.832

Additional Information

Note:

- @ 160Hz, 24VDC, 4mA conditions
- Typical values
- JBT 6822-2018 7.12.1 Vibration Testing Method
- References the mechanical structure of the sensor not being damaged in a non powered state, rather than in a working state
- Some products may have changes in size after adding TEDS

CXXB01

Supplied Accessories:

- Product Verification Report
- Install Screws

OPTIONALVERSIONS

- A: 10-32 Output Connector
- E: 10-32 Mounting Threads

COMPLIANCE WITH STANDARDS



LNS Intelligent Technology Co., Ltd

NO.3 Building
Qilu High-Tech District, Qihe,Dezhou
Shandong Province, China 251100
+86-0534-2150417

International:

9620 NE Tanasbourne Dr Ste 300
Hillsboro, OR, USA 97124
+1-503-208-5512
info@lnsdynamics.com