

Universal Testing Type Accelerometer

DETAILS

CXXB6X series charge acceleration sensor, using piezoelectric ceramic shear structure, with wide band frequency response, low sensitivity temperature response characteristics, high quality piezoelectric ceramics with long term stability, can ensure years of accurate measurements, the use of temperature -70 °C ~ 250°C. The housing is laser welded stainless steel for high sealing grade and strength, with M5 /10-32 mounting threads on the bottom.

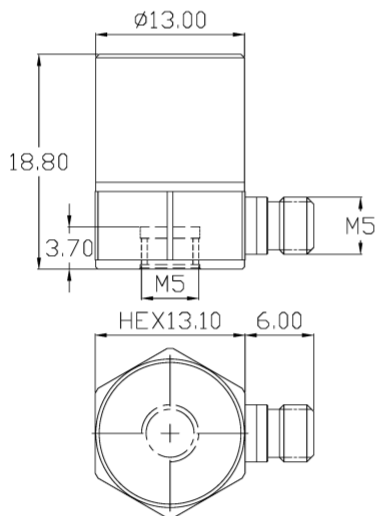
FEATURES

- Standard series with multiple range options
- Shear structure
- Broadband response

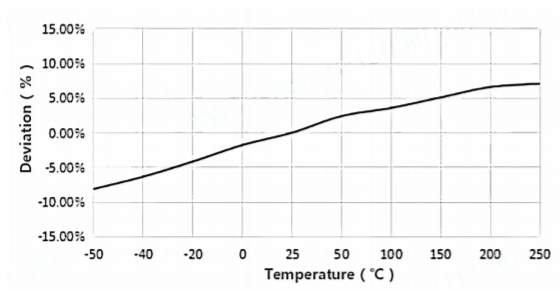
TYPICAL APPLICATIONS

- Environmental Stress Screening (ESS)
- Vibration Control
- Generalized High Temperature Vibration Monitoring

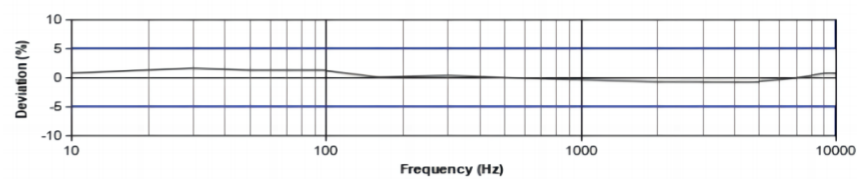
Fig_1 Dimensions of CXXB6X



Fig_2 Typical Temperature Response



Fig_3 Typical Frequency Response



Specifications-CXXB60

MODEL NUMBER		UNIT	C01B60	C02B60	C04B60
PERFORMANCE					
Sensitivity ¹		pC/g	5	10	30
		pC/(m/s ²)	0.5	1	3
Measurement Range		g	±6000	±5000	±1500
Non-Linearity ³		%	1		
Frequency Range	± 5%	Hz	0.5-15k	0.5-10k	0.5-7k
	±10%		0.3-16k	0.3-11k	0.3-9k
Resonance Frequency ²		Hz	≥48k	≥50k	≥50k
Discharge Time Constant ²		s	-		
Transverse Sensitivity		%	≤5		
ELECTRICAL					
Capacitance		PF	1200	1250	1300
Resistance		Ω	≥1×10 ¹¹	≥1×10 ¹¹	≥1×10 ¹¹
Electrical Isolation		Ω	-	-	-
ENVIRONMENTAL					
Sinusoidal Vibration Limit ⁴		g	8000	6500	3000
Shock Limit ⁴		g	8000	6500	3500
Temperature Range		°C	-70~250		
		°F	-94~482		
Temperature Response ²		%/°C	0.045		
PHYSICAL					
Sealing		-	Laser welding IP68		
Sensing Element		-	Piezoelectric ceramics		
Housing Material		-	Stainless steel		
Size	mm		HEX 13.1×18.8	HEX 13.1×18.8	HEX 13.1×18.8
	in		HEX 0.516×0.740	HEX 0.516×0.740	HEX 0.516×0.740
Electrical Connector		-	M5 Side (Opt. 10-32)		
Mounting Thread		-	M5 (Opt. 10-32)		
Weight ²	g		14.2	15.5	17
	oz		0.501	0.547	0.600

Additional Information

Note:

- @ 160Hz, 1g
- Typical values
- JBT 6822-2018 7.12.1 Vibration Testing Method
- References the mechanical structure of the sensor not being damaged in a non powered state, rather than in a working state

CXXB60

Supplied Accessories:

- Product Verification Report
- Install Screws

OPTIONAL VERSIONS

- A: 10-32 Output Connector
- E: 10-32 Mounting Threads

COMPLIANCE WITH STANDARDS



LNS Intelligent Technology Co., Ltd

NO.3 Building
Qilu High-Tech District, Qihe, Dezhou
Shandong Province, China 251100
+86-0534-2150417

International:

9620 NE Tanasbourne Dr Ste 300
Hillsboro, OR, USA 97124
+1-503-208-5512
info@lnsdynamics.com