

## IEPE Accelerometer

### DETAILS

B06A04 B10A01 type low-frequency measurement acceleration sensor, using piezoelectric ceramic shear structure, with a broadband frequency response, high-quality piezoelectric ceramics with long-term stability can ensure years of accurate measurement. Built-in ultra-low frequency low-impedance circuit, low noise, better sensitivity temperature response and other characteristics. The shell is laser welded stainless steel with extremely high sealing grade and strength, and is equipped with M5 mounting threads at the bottom.

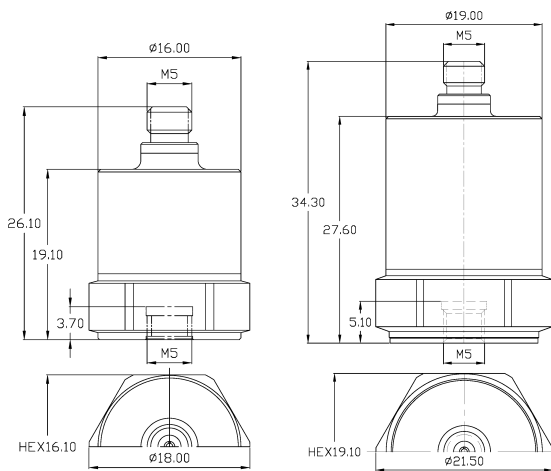
### FEATURES

- IEPE Low frequency acceleration
- Shear structure
- Low frequency circuit
- Ground insulation

### TYPICAL APPLICATIONS

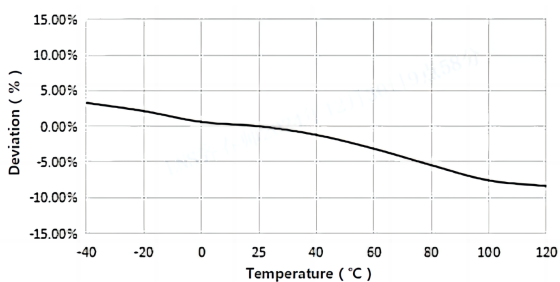
- Low frequency measurement
- Structural testing of bridges, buildings, etc

**Fig\_1** Dimensions of B06A04 B10A01

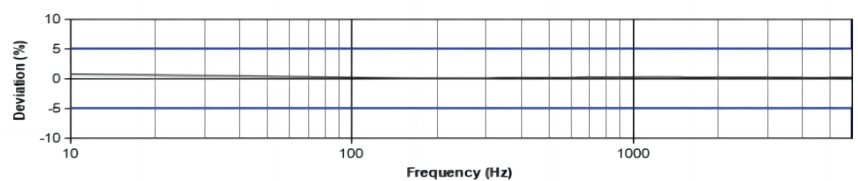


B06A04  
B10A01

**Fig\_2** Typical Temperature Response



**Fig\_3** Typical Frequency Response



## Specifications-BXXA0X

MODEL NUMBER		UNIT	B06A04	B10A01
<b>PERFORMANCE</b>				
Sensitivity <sup>1</sup>		mV/g	100	1000
		mV/(m/s <sup>2</sup> )	10	100
Measurement Range		g	±50	±5
Broadband Resolution <sup>2</sup>		g rms	0.0001	0.00001
Non-Linearity <sup>3</sup>		%	1	
Frequency Range		± 5%(Hz)	0.1-6k	0.06-2k
		±10%(Hz)	0.05-7k	0.04-3k
Resonance Frequency <sup>2</sup>		Hz	≥25k	≥13k
Discharge Time Constant <sup>2</sup>		s	≤1	≥10
Transverse Sensitivity		%	≤5	
<b>ELECTRICAL</b>				
Excitation Voltage		VDC	20-30	
Constant Current Excitation		mA	2-20	
Output Impedance		Ω	≤100	
Output Bias Voltage		V	8-12	
Electrical Isolation		Ω	-	≥1×10 <sup>8</sup>
Spectral Noise <sup>2</sup>		μg/√Hz	6	0.6
			2.4	0.24
			1.6	0.16
<b>ENVIRONMENTAL</b>				
Sinusoidal Vibration Limit <sup>4</sup>		g	400	40
Shock Limit <sup>4</sup>		g	1000	100
Temperature Range		°C	-40~120	
		°F	-104~248	
Temperature Response <sup>2</sup>		%/°C	-0.1	
<b>PHYSICAL</b>				
Sealing		-	Laser welding IP68	
Sensing Element		-	Piezoelectric ceramics	
Housing Material		-	Stainless steel	
Size		mm	HEX 16.1×26.1	HEX 19.1×34.3
		in	HEX 0.634×1.028	HEX 0.752×1.350
Electrical Connector		-	M5 Top	
Mounting Thread		-	M5	
Weight <sup>2</sup>		g	24	60
		oz	0.847	2.116
TEDS Optional <sup>5</sup>		-	Yes	

## Additional Information

### Note:

- @ 160Hz, 24VDC, 4mA conditions
- Typical values
- JBT 6822-2018 7.12.1 Vibration Testing Method
- References the mechanical structure of the sensor not being damaged in a non powered state, rather than in a working state
- Some products may have changes in size after adding TEDS

### BXXA0X

Supplied Accessories:

- Product Verification Report
- Install Screws

### OPTIONALVERSIONS

- A: 10-32 Output Connector
- E: 10-32 Mounting Threads
- T: TEDS

### COMPLIANCE WITH STANDARDS



### LNS Intelligent Technology Co., Ltd

NO.3 Building  
Qilu High-Tech District, Qihe,Dezhou  
Shandong Province, China 251100  
+86-534-2150417

International:

9620 NE Tanasbourne Dr Ste 300  
Hillsboro, OR, USA 97124  
+1-503-208-5512  
info@lnsdynamics.com